



#5

The Progressive Adventurer.

Explore beyond the beaten paths with the multi-purpose smart #5.

Styled by Mercedes-Benz

Iconic look, new edge.

The smart #5 takes everything you love about the brand – like frameless doors and that stunning Panoramic Halo Roof – and adds a fresh twist. With bold new details like the boxy design, oblong CyberSparksLED+ lights with Adaptive High Beam Assist, sleek matte finishes, and a cozy oak wood interior trim, it's got style and flexibility in spades. Ready for the city? Ready for the road? You bet.



Styled by Mercedes-Benz



#5

Always in focus:
with dual digital displays.

With dual ultra-clear 13" OLED touchscreens and a crisp 10.25" digital cluster, the smart #5 puts everything you need right at your fingertips – from navigation to entertainment, all in stunning detail. And thanks to day and night modes, it always looks just right, no matter when you drive.

#5 Highlights

- Panoramic Halo Roof**
 The Panoramic Halo Roof opens up new perspectives, letting in light to create a sense of space—while the electric roof blind gives you full control, effortlessly blocking heat and 99% of UV radiation when needed.
- Sennheiser Signature Soundsystem**
 The smart #5 Premium and BRABUS come with a Sennheiser Signature Sound System, featuring 20 speakers, including 1 central raising speaker, and Dolby Atmos for an immersive audio experience.
- Spacious Cargo**
 The smart #5 offers 1530 liters of storage with the rear seats down and up to 72 liters (or 47 liters for BRABUS, Pulse and Summit Edition) in the frunk, giving you all the space you need for any journey.

Exclusive rims for each line



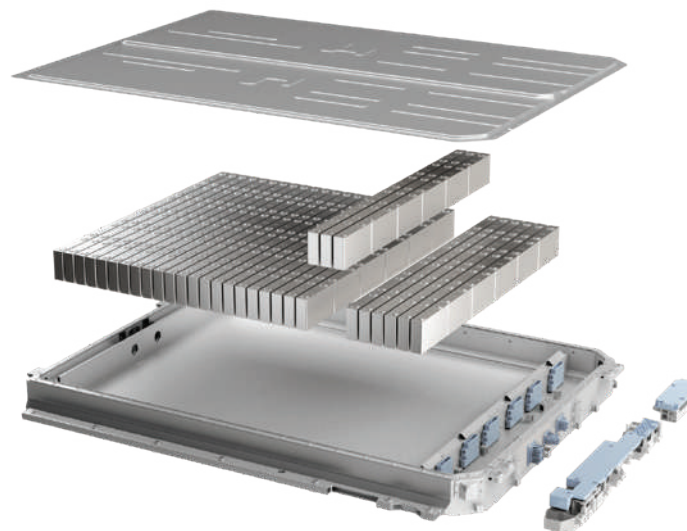
19" Orbit
Pro / Pro+



20" Sundial
Premium



21" Monoblock
BRABUS



Charge faster.
Go further.

Thanks to the smart #5's cutting-edge 800-volt battery technology, you can charge from 10% to 80% in just 18 minutes, giving you more time on the road. With up to 590 km of range on a full charge, it's built for long drives and spontaneous adventures – whether you're in the city or exploring beyond.

Styled by Mercedes-Benz

Bold Entry-Level Offering.

High-end features come naturally with every smart #5 – even in the entry models like Pro and Pro+. From your very first drive, enjoy cutting-edge tech and advanced safety features. The smart #5 and Pro+ offers impressive range and performance, along with ultra-fast charging capabilities, ensuring you're always ready to go. Inside, a high-definition OLED screen delivers an intuitive interface for seamless control, while the Advanced Driver Assistance Systems (ADAS) provide added peace of mind on every journey.

With smart #5 and Pro+, premium is no longer a luxury; it is the new standard.

airbags: 7



wheelbase: 2,900

Range up to

590 km

Top speed

200 km/h

0-100 km/h

6.5 sec

Charging speed

400 kW

10-80% ~ 18 min

Torque

373 Nm

Horsepower

358 HP

Styled by Mercedes-Benz

Set Your Own Standard.

Each smart #5 Line brings its own character with premium features, tailored to your lifestyle.

RWD, 267 kW, 358 HP

DC charging up to 400 kW

AC charging up to 22 kW

100 kWh battery

Frunk size 72L

Panoramic Halo Roof and Electric Halo Roof Blind

Powered Tailgate

CyberSparks LED headlights with automatic high beam

Man-made leather seats

Electrically adjustable, heated front seats

Ambient Lighting (256 colours)

Automatic 2-zone climate control

13" OLED Central Screen

10.25 inch HD Instrument Cluster

Audio System with 9 speakers

Apple CarPlay® & Android Auto

V2L Capability

12 Front + Rear parking sensors with Automatic Parking Assist

360° Camera

Smart Pilot Assist

NFC Key Card

Wireless charger 50wx2



Styled by Mercedes-Benz

Color Guide

Each smart #5 Line brings its own character with premium features, tailored to your lifestyle.

Pro+

Midnight Black



Digital White



Meta Black



Future Green



Pulsar Ruby



Cyber Silver

Cosmic Blue



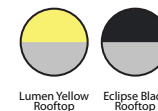
Digital White



Cyber Silver



Meta Black



Lumen Yellow Rooftop Eclipse Black Rooftop

Styled by Mercedes-Benz

Set Your Own Standard.

Each smart #5 Line brings its own character with premium features, tailored to your lifestyle.

RWD, 267 kW, 356 hp
DC charging up to 400 kW
AC charging up to 22 kW
100 kWh battery
Frunk size 72L

Panoramic Halo Roof and Electric Halo Roof Blind
Gustre Tailgate
CyberSparks LED+ with matrix headlights and adaptive high beam
Privacy glass

Duo Leather seats
Leather steering wheel
Electrically adjustable, heated front seats and rear seats
Ambient Lighting+ (256 colours)
Automatic 2-zone climate control
Ventilated Driver and Passenger Seat
Heat pump

12 Front+Rear parking sensors with Automatic Parking Assist
360° Camera
smart Pilot Assist
NFC Key Card
Wireless charger 50wx1

13" OLED dual Central Screen and passenger screen
10.25 inch HD Instrument Cluster
Augmented Reality Head-Up Display
Sennheiser® Soundsystem with 20 speakers, 1 central raising speaker and Dolby Atmos technology
Apple Carplay® & Android Auto
V2L Capability

590km Range (WLTP) ■
Premium



Styled by Mercedes-Benz

Color Guide

Each smart #5 Line brings its own character with premium features, tailored to your lifestyle.

Premium

Dynamic Nexus



Atom Grey



Pulser Ruby



Digital White



Cyber Silver



Meta Black



Saturn Beige



Laser Red

Shadow Black



Atom Grey



Pulser Ruby



Digital White



Cyber Silver



Meta Black



Saturn Beige



Laser Red

Lightyear Brown



Atom Grey



Pulser Ruby



Digital White



Cyber Silver



Meta Black



Saturn Beige



Future Green

Styled by Mercedes-Benz

The intelligent adventurer.

The smart #5 is ready for any adventure. Equipped with adaptive all-wheel drive and multiple driving modes, it seamlessly shifts from smooth highways to rugged trails. Practical features like a powered trailer hitch and Adventure Edition accessories ensure it's prepared for any journey. Whether it's exploring off-road paths or navigating the city, the smart #5 is always up for more.



- **Multi-mode drive system**

From efficient to adventurous – smart #5 adapts to you. Switch between drive modes, enjoy AWD off-road, and fine-tune braking from classic to one-pedal.

Sand – Maintains traction on loose surfaces.

Mud – Stability on slippery, uneven ground.

Snow – Grip and smooth drive on ice.

Adaptive (Premium & BRABUS)

Auto-adjusts to changing conditions.

Rock – Confident handling on rocky paths.

- **Vehicle-to-load**

Make your smart #5 a mobile power bank with V2L. Whether you're charging your e-bike, powering an electric camping light, or running other devices, the car's battery provides the energy you need. Just use the Device-to-Vehicle cable (sold separately) and enjoy on-the-go convenience.

- **Electric foldable Trailer Hitch**

Take more with you – the smart #5's electric tow bar (optional, standard on Summit Edition) makes it easy to hitch a trailer, bike rack or gear carrier at the touch of a button. With up to 1,600 kg towing capacity, your adventures just got a whole lot bigger.

- **Camping mode**

Turn your smart #5 into the perfect outdoor retreat with Camping Mode. Choose from three bed configurations to match your adventure:

King Size: Up to 1.4 m x 2.7 m maximum space for two.

Queen Size: Up to 1.4 m x 2.1 m cozy and comfortable.

Single Bed: Up to 0.6 m x 2.7 m perfect for solo traveller.

Styled by Mercedes-Benz

The BRABUS

MADE TO STAND OUT.



The BRABUS Line is the boldest edition of every smart model – an outstanding peak performer with BRABUS DNA and attitude. Always premium, powerful, unsurpassed. A no-compromise collaboration that is both bold and athletic, yet effortlessly unconventional.

It combines exclusive comfort with a wealth of premium features, setting a new standard in distinctive design.

637 HP
PEAK POWER

800V
ARCHITECTURE

400 kW
CHARGING SPEED

475 kW
PEAK POWER

0-100
3.8 s

AWD
ALL-WHEEL DRIVE

The BRABUS

Set Your Own Standard.

Each smart #5 Line brings its own character with premium features, tailored to your lifestyle.

AWD, 475 kW, 637 HP
Torque: 710 Nm
DC charging up to 400 kW
AC charging up to 22 kW
100 kWh battery

Dinamica® seats
Alcantara® Sports-style steering wheel
Electrically adjustable, heated front seats and rear seats
Ambient Lighting+ (256 colours)
Automatic 2-zone climate control
BRABUS exclusive interior color
Ventilated Driver and Passenger Seat
Heat pump

13" OLED dual Central Screen and passenger screen
10.25 inch HD Instrument Cluster
Augmented Reality Head-Up Display
Sennheiser® Soundsystem with 20 speakers, 1 central raising speaker and Dolby Atmos technology
Apple Carplay® & Android Auto
V2L Capability
Simulated Engine Sound

Panoramic Halo Roof and Electric Halo Roof Blind
Gesture tailgate
CyberSparks LED+ with matrix headlights and adaptive high beam
Privacy glass
Sporty Bodystyle and BRABUS Badges
Red painted brake callipers

12 Front+Rear parking sensors with Automatic Parking Assist
360° Camera
smart Pilot Assist
NFC Key Card
Wireless charger 50wx2

BRABUS



Styled by Mercedes-Benz

Color Guide

Set Your Own Standard.

Each smart #5 Line brings its own character with premium features, tailored to your lifestyle.

BRABUS

BRABUS



Laser Red



Meta Black



Radiant Red Rooftop
Eclipse Black Rooftop



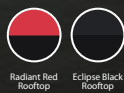
Cyber Silver



Digital White



Atom Grey



Radiant Red Rooftop
Eclipse Black Rooftop



Styled by Mercedes-Benz

The BRABUS

BRABUS Features

- Sporty BRABUS body kit
- 0-100 km in 3.8 sec
- BRABUS exclusive rims
- Alcantara® Sports-style steering wheel
- BRABUS exclusive interior colour
- Dinamica® seats
- Simulated engine sounds
- Red painted brake callipers



Styled by Mercedes-Benz

smart #5 Specifications

Model	Pro+	Premium	BRABUS
BASIC INFORMATION			
Length (mm)	4695	4695	4695
Width (mm)	1920	1920	1920
Height (mm)	1705	1705	1705
Wheelbase (mm)	2900	2900	2900
Number of seats	5	5	5
E-motor peak power (hp)	358	358	637
E-motor peak torque (Nm)	373	373	710
0-100km/h acceleration time (s)	6.5	6.5	3.8
WLTP range (km)	590	590	540
Driveline	RWD	RWD	AWD
Battery capacity (kwh)line	100	100	100
AC charging time (22kw, 10-80%)	5hrs	5hrs	5hrs
DC Super charging time (10-80%)	18min	18min	18min
Drive Mode	Eco	Eco	Eco
	Comfort	Comfort	Comfort
	Sport	Sport	Sport
			BRABUS

Styled by Mercedes-Benz

smart #5 Specifications

Model	Pro+	Premium	BRABUS
INTERIOR & COMFORT			
Steering wheel in Alcantara in sporty style	-	-	✓
Ambient light 256 colors brightness and color adjustable	✓	✓	✓
Steering wheel material	PU	Nappa leather	Alcantara
Seat material	Imitation leather	Nappa leather	Alcantara/Dinamica seats
Driver & passenger electric seats, 6 way powered, adjustment with lumbar support	✓	✓	✓
Sport style pedals	-	-	✓
Steering wheel heating	✓	✓	✓
Driver & passenger seats heating	✓	✓	✓
Ventilation in driver & passenger seats	-	✓	✓
Cooled center console	✓	✓	✓
Adaptive cruise control (ACC) stop&go	✓	✓	✓
Autonomous emergency brake (vehicle, Pedestrian, cyclist)	✓	✓	✓
Automatic park assist	✓	✓	✓
360 Camera	✓	✓	✓
Door open warning	✓	✓	✓
Traffic jam assist	✓	✓	✓
Emergency lane keep assist plus	✓	✓	✓
Blind spot detection	✓	✓	✓
Adaptive high beam	-	✓	✓
7 airbags	✓	✓	✓
Keyless entry	✓	✓	✓

Styled by Mercedes-Benz

smart #5 Specifications

Model	Pro+	Premium	BRABUS
INFOTAINMENT & CONNECTIVITY			
HUD	-	✓	✓
Sennhesier sound system with Dolby Atmos	-	✓	✓
Number of speakers	9	20	20
Wireless charging	X1	X2	X2
EXTERIOR & LIGHTS			
Concealed electric door handles – illuminated	✓	✓	✓
Halo rood – panoramic sunroof	✓	✓	✓
CyberSparks LED	✓	-	-
CyberSparks LED+ (adaptive high beam)	-	✓	✓
Gesture tailgate	-	✓	✓
Electric boot	✓	✓	✓
Sporty body Style	-	-	✓
Green tinted glass	✓	-	-
Privacy glass	-	✓	✓

Styled by Mercedes-Benz



Book a test drive now.



District 5:

Unit number S2 – District 5 mall –
South of Ain Sokhna Road after
Wadi Degla Tunnel –
Ain Sokhna direction .

Royal Park:

Unit number GOG-001-A Royal city
mall (Royal Park)
26th Jul. bridge –
Sheikh Zaid city.

رويال بارك:

وحدة رقم A - GOG-001 -
المركز التجاري لرويال سيتي (رويال بارك)
طريق 26 يوليو - الشيخ زايد

ديستركت 5:


وحدة رقم S2 مول ديستركت 5
جنوب طريق العين السخنة بعد نفق
وادي دجلة باتجاه العين السخنة

#5



CONTACT US

 smart.ezzelarabstar.com/

 <https://www.facebook.com/share/1AjXda52Tu/>

 www.instagram.com/smartcarsegypt

 19399

Styled by Mercedes-Benz

#5